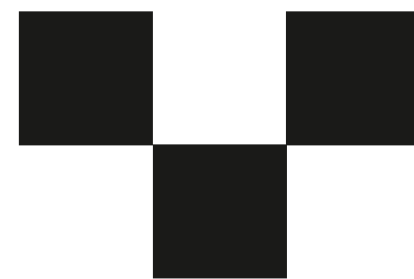
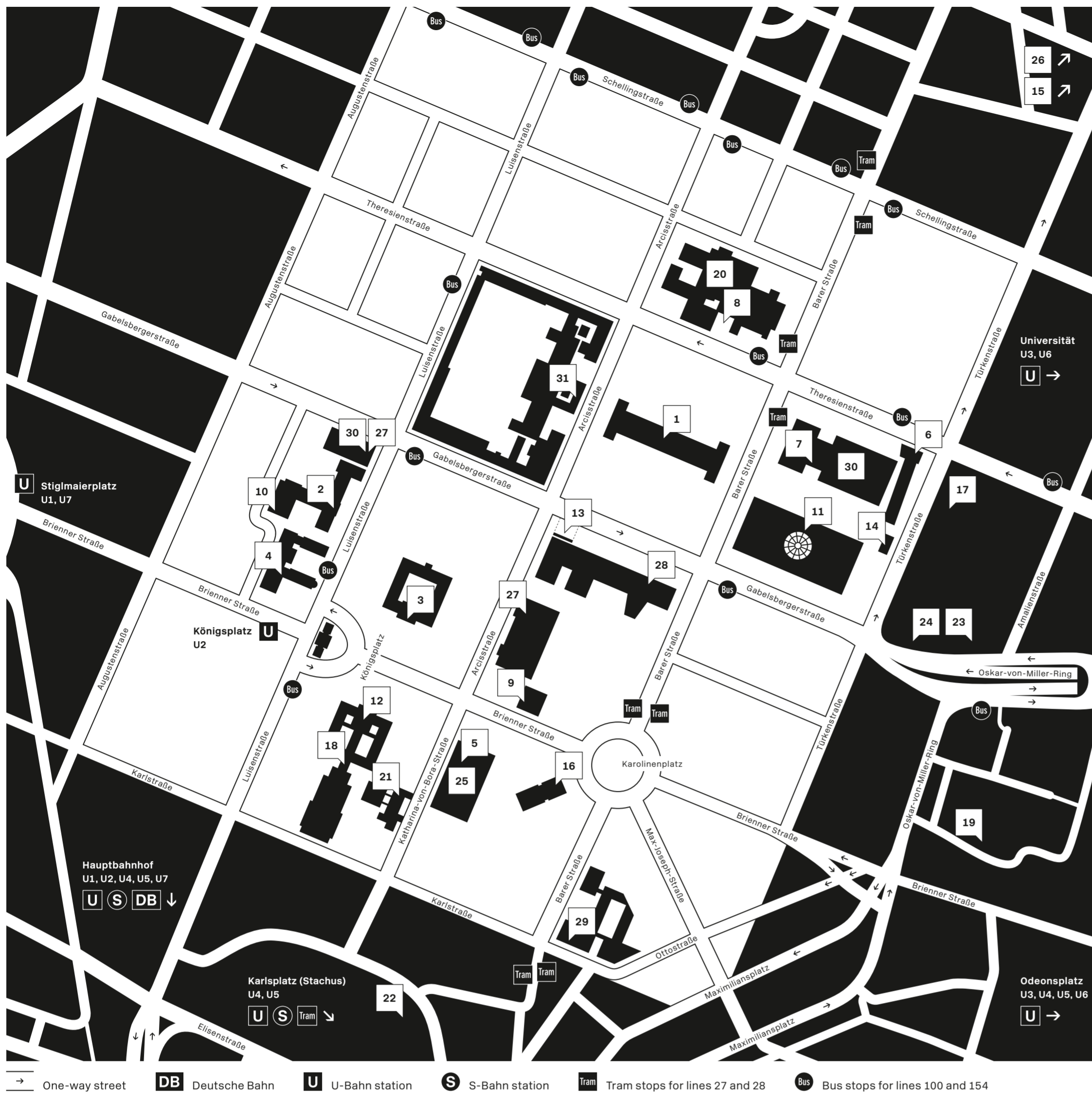


Kunstareal München

Art
Culture
Knowledge



www.kunstareal.de

MUSEUMS AND COLLECTIONS

- 1 Alte Pinakothek**
Barer Straße 27, 80333 München
- 2 Geologisches Museum München**
Luisenstraße 37, 80333 München
- 3 Glyptothek**
Königsplatz 3, 80333 München
- 4 Lenbachhaus München**
Luisenstraße 33, 80333 München
- 5 Museum für Abgüsse Klassischer Bildwerke**
Katharina-von-Bora-Straße 10, 80333 München
- 6 Museum Brandhorst**
Theresienstraße 35a, 80333 München
- 7 Museum Reich der Kristalle**
Theresienstraße 41, 80333 München
- 8 Neue Pinakothek**
Barer Straße 29, 80799 München
- 9 NS-Dokumentationszentrum München**
Max-Mannheimer-Platz 1, 80333 München
- 10 Paläontologisches Museum München**
Richard-Wagner-Straße 10, 80333 München
- 11 Pinakothek der Moderne**
Barer Straße 40, 80333 München
- Sammlung Moderne Kunst
Staatliche Graphische Sammlung München
Architekturmuseum der TU München
Die Neue Sammlung – The Design Museum**
Studiensaal / Staatliche Graphische Sammlung München
Katharina-von-Bora-Straße 10, 80333 München
See map n° 5
- 12 Staatliche Antikensammlungen**
Königsplatz 1, 80333 München
- 13 Staatliches Museum Ägyptischer Kunst**
Gabelsbergerstraße 35, 80333 München
- 14 Türkentor**
Türkenstraße 17, 80333 München

CULTURAL INSTITUTIONS

- 15 AkademieGalerie**
Mezzanine floor of the Universität subway station (Exit Akademiestraße)
 - 16 Amerikahaus München**
Karolinenplatz 3, 80333 München
 - 17 Architekturgalerie München e. V.**
Türkenstraße 30, 80333 München
 - 18 Benediktinerabtei und Stiftsbibliothek St. Bonifaz**
Karlststraße 34, 80333 München
 - 19 DG Deutsche Gesellschaft für christliche Kunst e. V.**
Finkenstraße 4, 80333 München
 - 20 Bayerische Staatsgemäldesammlungen**
Barer Straße 29, 80799 München
 - Doerner Institut
Max Beckmann Archiv
Stiftung Ann und Jürgen Wilde
Fritz-Winter-Stiftung**
 - 21 Evangelisch-Lutherische Kirche in Bayern / Landeskirchenamt**
Katharina-von-Bora-Straße 11-13, 80333 München
 - 22 Kunstpavillon im Alten Botanischen Garten**
Sophienstraße 7a, 80333 München
 - 23 Oskar von Miller Forum**
Oskar-von-Miller-Ring 25, 80333 München
 - 24 St. Markus / Evangelisch-Lutherische Kirchengemeinde**
Gabelsbergerstraße 6, 80333 München
 - 25 Zentralinstitut für Kunstgeschichte**
Katharina-von-Bora-Straße 10, 80333 München
- Kunstareal München
c/o Die Neue Sammlung
Türkenstr. 15
80333 München
- Version 02/2019

UNIVERSITIES AND ACADEMIES

- 26 Akademie der Bildenden Künste München**
Akademiestraße 2-4, 80799 München
- 27 Hochschule für Musik und Theater München**
Arcisstraße 12, 80333 München (main building)
Luisenstraße 37a, 80333 München
- 28 HFF Hochschule für Fernsehen und Film**
Bernd-Eichinger-Platz 1, 80333 München
- 29 HM Hochschule für angewandte Wissenschaften München**
Karlststraße 6, 80333 München
- 30 LMU Ludwig-Maximilians-Universität**
Luisenstraße 37, 80333 München
Theresienstraße 37-41, 80333 München
- 31 TUM Technische Universität München**
Arcisstraße 21, 80333 München

ART × CULTURE × KNOWLEDGE = A REAL EXPERIENCE³

What is Kunstareal München?
Munich's Kunstareal art quarter lies right in the heart of Munich and, with its museums and universities, is one of the most important cultural locations in Europe. In an area measuring 500 x 500 metres, in the middle of the lively district of Maxvorstadt, visitors encounter a unique blend of art, culture and knowledge.

The Kunstareal has developed over 200 years and today presents over 5,000 years' worth of cultural history. Located between the magnificent square of Königsplatz and Theresienstraße, the Kunstareal offers an extraordinary variety of museums with exhibits that range from impressive ancient Egyptian artefacts and antiques to modern art. 18 museums and collections, over 40 galleries, six internationally renowned academic institutions and several cultural organisations lie within walking distance of each other.

Kunstareal's Architectural Highlights
Wandering through the Kunstareal leads to architectural as well as numerous cultural gems. The celebrated Bayerische Staatsgemäldesammlungen (Bavarian State Painting Collections) are brought together across four museums—the Alte Pinakothek, the Neue Pinakothek, the Pinakothek der Moderne and Museum Brandhorst. They inspire interested visitors and connoisseurs with renowned artworks dating from the Late Middle Ages to the present day. The Glyptothek, the Akademie der Bildenden Künste and the impressive new building of the Staatliches Museum für Ägyptische Kunst are also part of the Kunstareal, as well as scientific institutions, such as the Paläontologisches Museum, the Museum Reich der Kristalle and the central educational venue for examining the history of National Socialism, the NS-Dokumentationszentrum, which opened in 2015.

Visitors interested in architecture are also inspired by the Kunstareal's grand, historic buildings, squares and museums as well as outstanding new buildings and extensions by internationally renowned architects. Contemporary features can be seen, for example, in the Museum Brandhorst and the spectacular Lenbachhaus with its successful combination of modern architecture and historic artist's villa.

Munich's inhabitants and visitors are invited to make new discoveries and experience new things over and over again in the Kunstareal's scientific and creative venues. Whether it be inside, outside or underground, visitors can choose from a varied and constantly-updated programme, encounter something new or rediscover the familiar.

Rooted in the lively surroundings of Maxvorstadt, with its trendy street cafes and restaurants, magnificent green spaces, as well as historic, preserved gardens—a visit to Munich's Kunstareal is an unforgettable, addictive experience for young and old, not only for culture vultures!



You can find further information about the museums and collections at: www.kunstareal.de

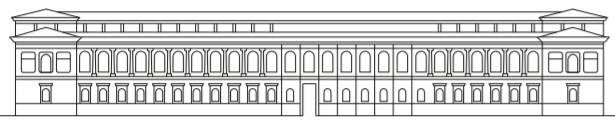
This symbol indicates that the building is fully accessible. People in wheelchairs but also, for example, people with strollers can move without assistance throughout the building.

This symbol indicates that the building is partially accessible. Maybe museum staff or an accompanying person is required to move through the building. In some cases, only parts of a building are accessible to people in wheelchairs or with strollers. These buildings are marked with this symbol as well.

Kunstareal München

www.kunstareal.de

1 Alte Pinakothek www.pinakothek.de



Built by Leo von Klenze, by order of King Ludwig I, and opened in 1836, the Alte Pinakothek is one of the seminal museum buildings. After suffering extensive damage in the Second World War, the building was rebuilt by Hans Döllgast and completed in 1957. In one of the world's most important collections, it encompasses the history of European painting from the Middle Ages to late rococo. Among the more than 700 paintings are masterpieces by Altdorfer, Dürer, van der Weyden, Rubens, Rembrandt, Boucher, Raphael, Leonardo da Vinci and Murillo.

Opening hours:
Daily, except Monday, 10–18, Tuesday 10–20

2 Geologisches Museum München www.palmuc.de/bspg



The Geologisches Museum München is part of the Bayerische Staatssammlung für Paläontologie und Geologie (Bavarian State Collection for Palaeontology and Geology). It presents interesting information about the world under our feet. Exhibitions examine the history of Bavaria's stones, geological processes and cycles, changes in the earth's crust and one of today's hot topics, our earth's raw materials. Further geological matters are presented in special temporary exhibitions.

Opening hours:
Monday–Thursday 8–16, Friday 8–14,
closed Saturday, Sunday and Public Holiday,
first Sunday in the month 10–16

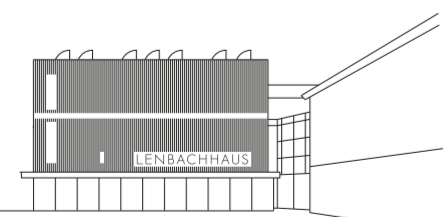
3 Glyptothek www.antike-am-koenigsplatz.mwn.de/en



The Glyptothek is Munich's oldest museum. Built under King Ludwig I, it was completed in 1830. Leo von Klenze gave it a temple façade in Ionic order. The exhibition displays the history of antique sculpture from 600 BC to 400 AD by means of outstanding pieces. The Apollo of Tenea is the most beautiful kouros of Archaic time. The pedimental sculptures from the temple of Aphaia in Aegina, at the transition from the Archaic to the Classical period (500/490 BC), are the most valuable treasure of the museum. The "Barberini Faun" exemplifies Hellenistic sculpture and the collection of Greek and Roman portraits is one of the world's finest.

Opening hours:
Daily, except Monday, 10–17, Thursday 10–20

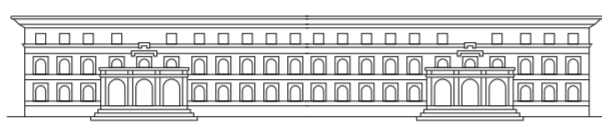
4 Lenbachhaus München www.lenbachhaus.de



The Städtische Galerie im Lenbachhaus occupies the historic villa of Franz von Lenbach, the "prince of painters." Built as a residence for an artist, the museum charms visitors with the intimate proportions of its rooms. The addition of an extension designed by the renowned architects at Foster + Partners have preserved this welcoming quality. Now a fascinating dialogue unfolds between the old and new sections of the complex where the stunning "Blue Rider" collection meets nineteenth-century art and contemporary art with world famous artists such as Joseph Beuys.

Opening hours:
Wednesday–Sunday 10–18, Tuesday 10–20

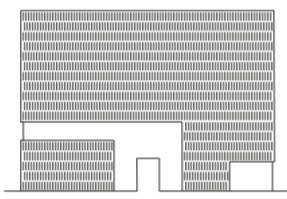
5 Museum für Abgüsse Klassischer Bildwerke www.abgussmuseum.de



The Museum für Abgüsse Klassischer Bildwerke was established in 1869 and has been housed in the Haus der Kulturinstitute since 1979. The collection displays almost 2,000 replicas of sculptures from ancient Greece and Rome (700 BC – 500 AD). The original world-famous marble and bronze masterpieces are scattered among all the big museums but here they are brought together under one roof as excellent plaster casts. The museum's main attraction is a coloured plaster model of the Parthenon of Athens to a scale of 1:20.

Opening hours:
Monday, Tuesday, Wednesday, Friday 10–18,
Thursday 10–20

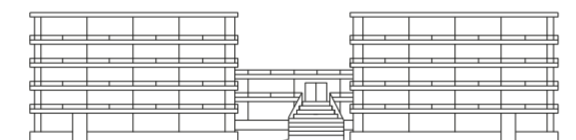
6 Museum Brandhorst www.museum-brandhorst.de



Since 2009 the Museum Brandhorst has presented an impressive ensemble of contemporary artworks dating from the 1960s onwards. The Brandhorst collection contains over 1,000 works from seminal 20th and 21st century artists, including comprehensive and internationally-significant collections of works by the artist Cy Twombly and pop art's leading protagonist, Andy Warhol. Sigmar Polke, Bruce Nauman, Louise Lawler, Cady Noland, Martin Kippenberger and Jeff Koons are among the other important figures from contemporary art history whose work is up for discovery.

Opening hours:
Daily, except Monday, 10–18, Thursday 10–20

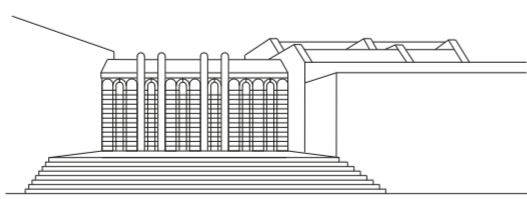
7 Museum Reich der Kristalle www.mineralogische-staatssammlung.de



The Museum Reich der Kristalle displays the most outstanding exhibits from the Mineralogische Staatssammlung München, one of Germany's biggest mineralogical research collections. Within it are many significant pieces that are closely connected to the history of the Bavarian royal dynasty. Of particular interest among the exhibits are gemstones such as the Leuchtenberg emerald and the King Ludwig diamond as well as meteorites from Mars and the Moon, including a 285-kilogramme iron meteorite from Namibia that people are also allowed to touch!

Opening hours:
Daily, except Monday, 13–17

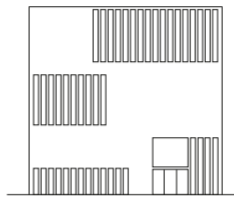
8 Neue Pinakothek www.pinakothek.de



The Neue Pinakothek exhibits around 400 paintings and sculptures from the 19th century, representing neo-classicism to art nouveau. The once private collection of Ludwig I which initially inhabited about 100 works makes up the majority of the museum's inventory and contains landscapes, genre painting and historical painting in particular. Among its outstanding works are German romanticist and French impressionist paintings, including pieces by Caspar David Friedrich, Edouard Manet, Paul Cézanne and Vincent van Gogh. Its current building was opened in 1981.

Opening hours:
Daily, except Tuesday, 10–18, Wednesday 10–20

9 NS-Dokumentationszentrum München www.ns-dokuzentrum-muenchen.de



The NS-Dokumentationszentrum is Munich's central place of education and remembrance documenting and addressing the crimes of the Nazi dictatorship and their origins, manifestations and consequences right up to the present day. Situated on the site of the former Nazi party headquarters the centre offers a permanent exhibition, a learning centre with digital media and research opportunities and a varied programme of education and events. Dealing with Munich's Nazi past, the NS-Dokumentationszentrum broadens the scope of the Kunstareal.

Opening hours:
Tuesday–Sunday 10–19

10 Paläontologisches Museum München www.palmuc.de/bspg



The Paläontologisches Museum belongs to the Bayerische Staatssammlung für Paläontologie und Geologie (Bavarian State Collection for Palaeontology and Geology) and is located in a magnificent historicist building. It is dedicated to the history of life and the earth's development and displays fossils from throughout earth's history, from over three billion years ago to the present day. Among the highlights are the Urvogel, Archaeopteryx, Bavaria's biggest dinosaur, and the Mühldorf elephant ancestor, Gomphotherium.

Opening hours:
Monday–Thursday 8–16, Friday 8–14,
closed on Saturday, Sunday and public holiday
first Sunday in the month 10–16

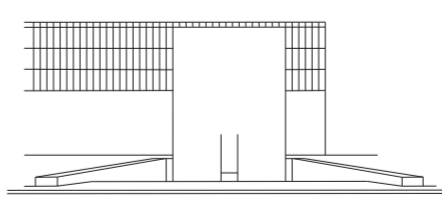
12 Staatliche Antikensammlungen www.antike-am-koenigsplatz.mwn.de/en



The exhibition building was constructed from 1838 until 1848 by Georg Friedrich Ziebland. Since 1967 it houses the collection of the ancient artes minores, acquired in early times by Bavarian monarchs, later by private donors and the State of Bavaria. The museum holds the worldwide most beautiful collection of Greek vases, amongst others the famous Exekias cup, but also unique Etruscan and Greek gold jewellery, outstanding small scale figurines and equipment of bronze and clay, engraved gems and luxury jars of ancient glass.

Opening hours:
Daily, except Monday, 10–17, Wednesday 10–20

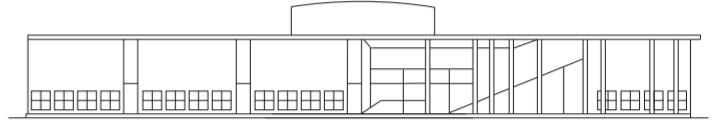
13 Staatliches Museum Ägyptischer Kunst www.smaek.de



The opening of the Staatliches Museum Ägyptischer Kunst in 2013 at its new location opposite the Alte Pinakothek represents a broadening of the horizon of the Kunstareal under three aspects. Historically, the Egyptian Museum adds three millennia of artistic evolution; geographically, it integrates the African continent into a hitherto pure "western" presentation of art, and in its architecture it opens huge underground spaces. Strictly focussing on art, it invites to a comparative visual experience – as expressed by Maurizio Nannucci's neon text in the first sculpture gallery: ALL ART HAS BEEN CONTEMPORARY.

Opening hours:
Daily, except Monday, 10–18, Tuesday 10–20
Open on Easter Monday and Whit Monday

11 Pinakothek der Moderne The Pinakothek der Moderne, which opened in 2002, includes four independent museums:



Sammlung Moderne Kunst www.pinakothek.de

The Sammlung Moderne Kunst is a collection of internationally significant works from all genres of art from the start of the 20th century to the present day. Key works from Paul Klee, Ernst Ludwig Kirchner and Max Beckmann provide an emphasis on the classical modern. Works by Joseph Beuys, Donald Judd and Andy Warhol show key developments in art since 1960. Paintings, sculpture, photography and contemporary media art are featured in temporary exhibitions.

Staatliche Graphische Sammlung München www.sgsm.eu

The Staatliche Graphische Sammlung München holds one of Germany's most important collections of drawings and graphic reproductions and belongs to the world's leading graphic collections. Its inventory of around 400,000 pieces spans drawing and graphic reproduction's history from the 12th Century to the present day. The Graphische Sammlung regularly offers temporary exhibitions on topics ranging from ancient art to the contemporary.

Architekturmuseum der TU München www.architekturmuseum.de

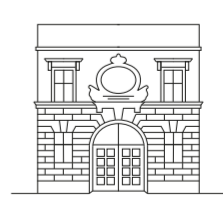
The Architekturmuseum der TU München has temporary exhibitions on the history of architecture and current developments in the field. Constant new acquisitions contribute to Germany's largest specialist and research archive for architecture, which includes around 500,000 drawings and plans relating to approximately 700 pieces of architecture, over 100,000 original photographs as well as many models and other archival materials.

Die Neue Sammlung – The Design Museum www.die-neue-sammlung.de

Established around 100 years ago in 1925, Die Neue Sammlung is the world's oldest design museum. The collection's high quality, its diversity and historical depth allows it to present, in a unique way, all kinds of different aspects of the development of design. Today the state museum maintains the largest collection of design in the world with around 100,000 objects from industrial design, applied art and graphic design and is an authority on this subject in the 20th and 21st Century.

Opening hours:
Daily, except Monday, 10–18, Thursday 10–20

14 Türkentor www.pinakothek.de



The 2002 sculpture, "Large Red Sphere" by the American artist, Walter De Maria (1935–2013) was acquired by the Udo und Anette Brandhorst Stiftung in 2006. In October 2010 the sculpture was made accessible to the public in the Türkentor, which was newly renovated and remodelled by Sauerbruch Hutton Architects. Located between the Pinakothek der Moderne and the Museum Brandhorst, and directly opposite the Alte Pinakothek's Klenze-Portal, the Türkentor, occupies a significant location within the Kunstareal.

Opening hours:
Daily, except Monday,
April–October 11–17, November–March 12–15